

CROWNE PLAZA®

— BY IHG —

Bratislava



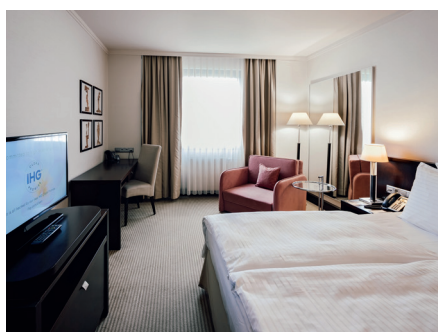
About the hotel

Crowne Plaza Bratislava combines a central location in the historic city center (opposite the Presidential Palace, just a few minutes' walk from the Old Town), elegant and comfortable accommodation, flexible conference facilities, and excellent gastronomic services. Thanks to its proximity to the main railway station (approx. 5 minutes by car), Bratislava Airport (approx. 20 minutes by car), and excellent public transport connections, it is an ideal choice for both demanding business travelers and tourists.



Modern Design & Exceptional Comfort

Crowne Plaza Bratislava has undergone extensive renovations, bringing a modern and elegant design to all public areas of the hotel. Guests can enjoy a spacious and stylish lobby with zones for informal meetings or relaxation, as well as new design solutions in the bar and restaurant area. The redesign introduced bright colors, high-quality materials, and contemporary interior design elements that highlight the hotel's premium character and create a pleasant atmosphere for both business and leisure stays.



Accommodation

The hotel offers 224 elegantly furnished rooms, including 15 spacious suites. All rooms and suites are equipped with comfortable beds, a work desk, high-speed internet access, and a bathroom with a bathtub..



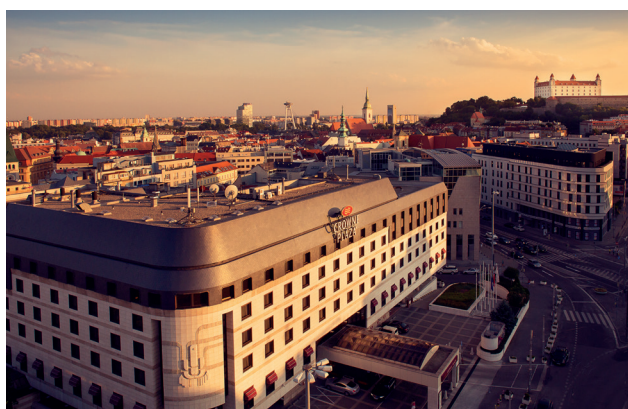
Meetings & Events

Crowne Plaza Bratislava is the largest conference hotel in the capital. It offers 14 flexible meeting rooms with a total area of over 1,200 m² and a capacity of up to 800 guests. The main hall, covering 329 m², can comfortably accommodate up to 350 people.



Dining

Hotel guests can enjoy a rich buffet breakfast at the Fresh! restaurant, offering a unique view of the Old Town as it awakens. The Plaza Bar serves a wide selection of hot and cold bar classics, complemented by an à la carte menu.



Getting Here

By Plane

The hotel enjoys an excellent location just 20 minutes by car from Bratislava Airport (BTS) and around 40 minutes from Vienna Airport (VIE), making it perfectly accessible for both business and leisure travelers.

By Car

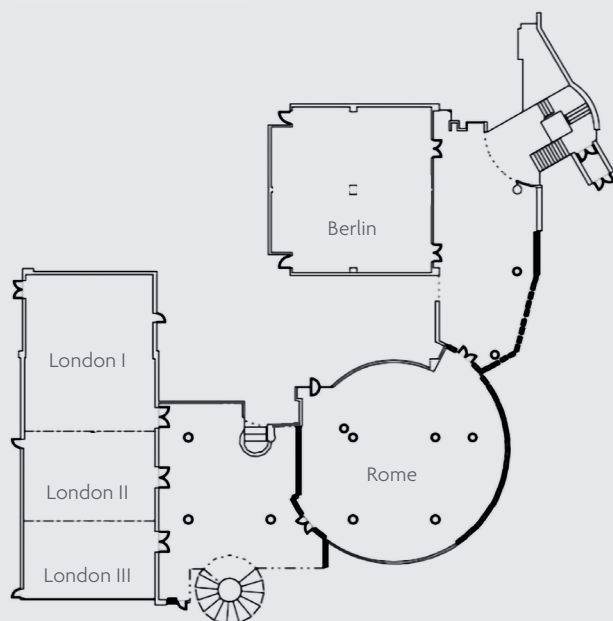
Guests can conveniently park in the hotel's underground garage, which accommodates 55 vehicles. For larger groups, one bus can also be parked directly in front of the hotel.

CROWNE PLAZA BRATISLAVA

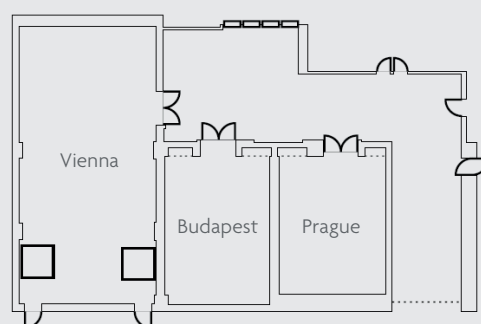
Hodžovo nám. 2, 816 25 Bratislava
+421 2 5934 8111 • info@cpbratislava.sk • www.cpbratislava.sk



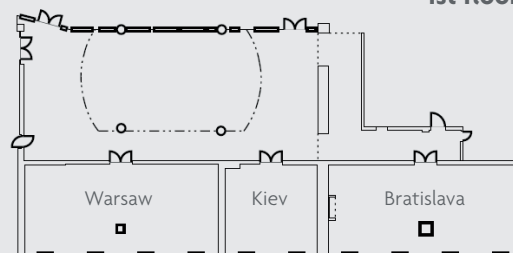
-1st floor



Ground floor



1st floor



Capacity chart

	School	Theater	Banquet	U-shape	I-shape	Reception	Cabaret	Area	Height
London	200	350	180	84	80	350	147	329 m ²	2,90 m
London I	80	100	60	38	32	120	63	159 m ²	2,90 m
London II	50	80	40	30	24	70	42	90 m ²	2,90 m
London III	50	80	40	30	24	70	42	80 m ²	2,90 m
London I+II	140	200	120	66	52	190	105	249 m ²	2,90 m
London II+III	100	160	80	46	38	140	84	170 m ²	2,90 m
Rome	74	122	120	42	38	180	42	250 m ²	2,90 m
Berlin	112	160	120	40	30	140	84	205 m ²	2,90 m
Vienna	40	60	50	30	28	50	35	87 m ²	2,90 m
Prague	16	26	10	16	16	30	7	39 m ²	2,90 m
Budapest	16	26	10	16	16	30	7	39 m ²	2,90 m
Bratislava	42	52	50	32	30	50	35	89 m ²	2,90 m
Kiev	20	26	20	16	12	30	14	45 m ²	2,90 m
Warsaw	42	52	50	32	30	50	35	89 m ²	2,90 m
Lisbon	n/a	n/a	n/a	n/a	8	n/a	n/a	16 m ²	2,90 m
Madrid	n/a	n/a	n/a	n/a	6	n/a	n/a	9 m ²	2,90 m
The Studio	n/a	n/a	n/a	n/a	6	n/a	n/a	25,2 m ²	2,80 m

CROWNE PLAZA BRATISLAVA

Hodžovo nám. 2, 816 25 Bratislava

+421 2 5934 8111 • info@cpbratislava.sk • www.cpbratislava.sk